

Processor Trays

Red meat, poultry and specialty trays

TEKNIPLEX

Consumer Products

TekniPlex processor trays are engineered to meet consistent quality and performance standards for case-ready meat and poultry products.



Overview

Every polystyrene (PS) foam processor tray that TekniPlex produces is backed by four decades of engineering experience. Our consistent quality, durability and thick edges mean that your meat or poultry products are being packaged in a tray that will withstand the rigors of handling and distribution. We deliver visual appeal so that your product ends up in the shopping cart, not left behind in the refrigerated case.

Why consider TekniPlex processor trays?

Case-ready. TekniPlex trays are ideal for case-ready poultry, red meat, seafood and other perishable food products.

Consistent Quality. We manufacture processor-grade trays exclusively. That means we don't have changeover issues which typically result in quality variations.

Durability. Our trays have a thick edge and sidewall strength attributes. Not because we use more material, but because our proprietary process produces a foam tray that is thicker than traditional trays. A thicker tray means fewer rewraps. Your operation benefits by having less product waste and lower labor costs, which typically result in quality variations.

Colors. We offer a variety of stock colors, with custom options also available.

Inventory management. We know how important it is to receive your trays in time to meet your production requirements. We excel at managing our finished goods output, so that you can manage yours.



Recyclable. Polystyrene is recyclable at facilities across the United States.



Lightweight. Polystyrene's light weight makes it better to transport, minimizing carbon footprint.



Landfill. Polystyrene can be compressed 90% - 95% of original size when air is forced out in a landfill.



Production scrap. TekniPlex recycles all of its production scrap, putting it back into the production cycle.

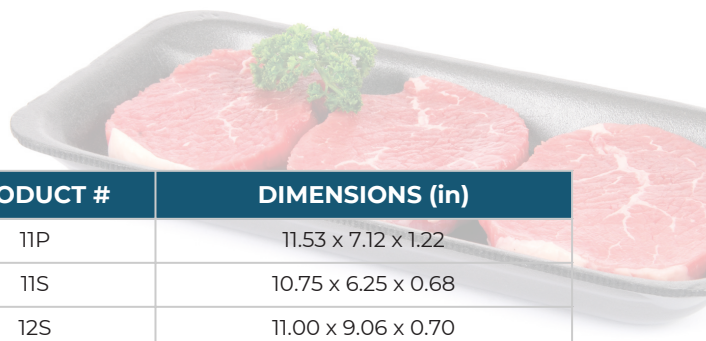


Energy/water usage. A peer-reviewed life cycle assessment by *Franklin Associates* found that commonly used polystyrene foam containers use significantly less energy and water than comparable paper-based products.



Processor Trays

Red meat, poultry and specialty trays



PRODUCT #	DIMENSIONS (in)
1.5	8.31 x 3.75 x 0.81
1LB	7.05 x 5.25 x .75
2S	8.20 x 5.70 x 0.65
2	8.20 x 5.70 x 0.97
2P	8.20 x 5.70 x 1.25
3S	8.62 x 6.55 x 0.87
3P	8.62 x 6.56 x 1.25
3D	8.62 x 6.56 x 1.50
3LT	8.03 x 6.53 x 1.15
4S	9.12 x 7.00 x 0.62
4	9.125 x 7.19 x 1.38
4DD	9.25 x 7.00 x 1.62
4DT	9.25 x 7.25 x 1.75
4DP	9.375 x 7.125 x 1.75
4P	9.12 x 7.18 x 1.37
5	10.25 x 5.25 x 1.00
5T	10.50 x 4.31 x 1.15
6P	9.75 x 7.50 x 1.37
6D	9.56 x 7.375 x 1.60
7D	14.75 x 5.625 x 1.48
7P	14.75 x 5.75 x 0.93
8H	10.60 x 8.31 x 1.25
8P	10.62 x 8.50 x 1.40
8S	9.88 x 7.88 x 0.60
8D	10.68 x 8.62 x 1.62
9H	11.75 x 9.75 x 1.25
9P	11.68 x 9.09 x 1.28
9LH	11.87 x 9.88 x 1.06
9S	12.25 x 9.25 x 0.75
10PN	10.75 x 5.44 x 1.19
10P	10.93 x 5.87 x 1.25
10PD	10.75 x 6.12 x 1.62
10K	10.75 x 5.75 x 2.00
10S	10.75 x 5.75 x 0.65

PRODUCT #	DIMENSIONS (in)
11P	11.53 x 7.12 x 1.22
11S	10.75 x 6.25 x 0.68
12S	11.00 x 9.06 x 0.70
14H	6.25 x 6.25 x 1.00
15	14.62 x 7.93 x 1.33
16SH	11.62 x 7.25 x 0.73
16HDD	11.00 x 7.12 x 1.56
17S	8.75 x 4.75 x 0.69
20SP	8.75 x 6.25 x 0.70
20K	12.00 x 8.85 x 2.375
22K	12.00 x 10.00 x 2.875
25HS	14.75 x 8.00 x 0.91
25D	14.00 x 8.62 x 1.62
25DP	14.87 x 8.12 x 1.75
42	8.50 x 6.18 x 2.13
148D	14.00 x 8.00 x 1.62
809D	11.20 x 9.26 x 2.00
1014	14.00 x 10.00 x 1.28
1014S	14.00 x 9.75 x 1.00
1216	15.62 x 12.37 x 0.87
1418	18.00 x 14.00 x 1.00
1015D	10.00 x 14.75 x 1.72
Burger trays	
2KCP	9.81 x 5.65 x 1.33
4CPS	9.56 x 9.56 x 1.08
4CP	9.95 x 9.95 x 1.75
5CP	12.27 x 9.45 x 1.15
Meatball trays	
MTMB 6 cell	9.34 x 6.37 x 2.175
MTMB 12 cell	9.25 x 7.00 x 1.56
Specialty trays	
Platter	12-in ø
Cake circles	8- and 9-in ø

Tray colors, dimensions, and availability may vary by region.
Pre-padded options are available on many trays.

If you are interested in finding out more about how TekniPlex can help improve your quality and performance, please visit our website.



TEKNIPLEX
Consumer Products

DISCLAIMER: The information set forth herein is subject to change without notice and should not be used as a substitute for your own independent investigation and business judgement. No intellectual property rights are conveyed hereby. TEKNI-PLEX DISCLAIMS ALL WARRANTIES, EXPRESS OR IMPLIED, INCLUDING, BUT NOT LIMITED TO, WARRANTIES OF MERCHANTABILITY AND FITNESS FOR ANY PARTICULAR PURPOSE.